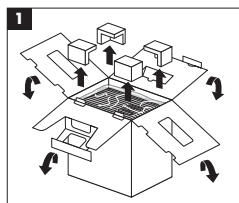
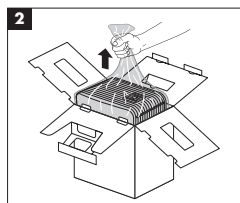


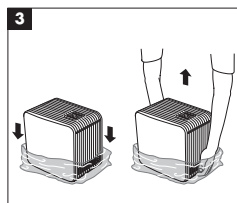
QUICK SET UP GUIDE S450



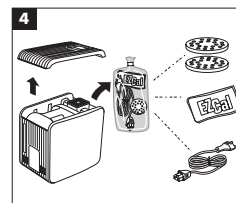
1 Open the carton box carefully and remove all styrofoam parts from the packaging.



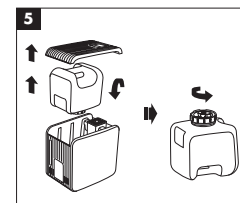
2 Carefully remove the unit from its box.



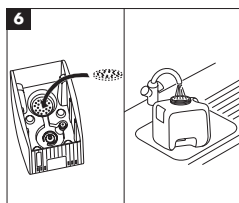
3 Remove the unit from the plastic wrapping. Note: the top cover of the unit is loose.



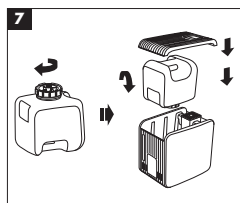
4 Remove the accessories from inside the unit.



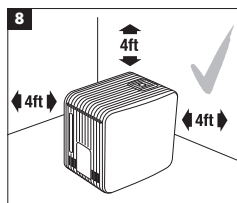
5 Remove the top cover of the unit and take the water tank from the unit by using the tank handle.



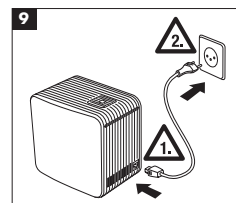
6 Insert the Anti-Mineral-Pad into the steam tray. Turn the water tank upside down, unscrew the cap and fill with water.



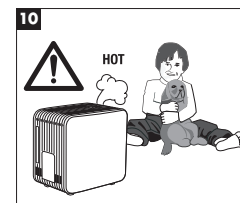
7 Close the tank cap securely, place the tank into the unit and put the cover back on.



8 Use the appliance only on a flat and stable surface that is heat and water resistant. Keep a minimum distance of 4ft from walls, furniture, and curtains.

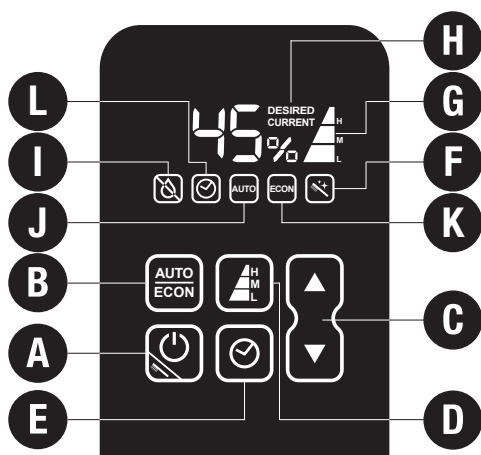


9 Always plug the power cord into the appliance first, before connecting it to the electrical outlet. A sound from the unit indicates that the appliance is supplied with power.



10 **Caution:** Hot steam and boiling water! Do not allow the appliance to be used by children. Steam and boiling water can lead to burns.

QUICK OPERATION DESCRIPTION S450



- A) Switch on/off
- B) AUTO- / ECON-Mode
- C) Setting humidity level
- D) Manual operation
- E) Timer
- F) Cleaning symbol (also see section about Decalcification-Mode)
- G) Output level symbol
- H) Current and desired relative humidity symbol
- I) Automatic shut-off «Water Tank empty»
- J) AUTO-Mode symbol
- K) ECON-Mode symbol
- L) Timer symbol

DO NOT DISCARD! Save for future reference.

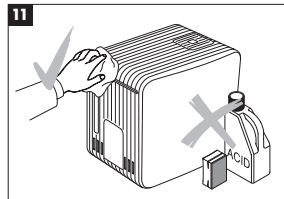
Please read the manual or check our website www.airoswiss.net for further information.

RECOMMENDED TO CLEAN WITH EZCaI AND EZCAL PRO

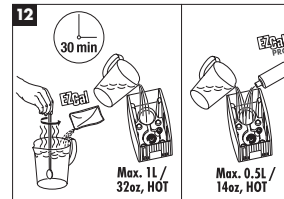


What is EZCaI and EZCAL Pro?

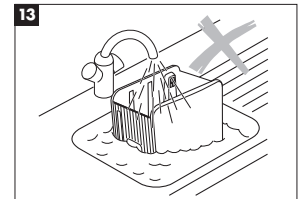
EZCaI and EZCAL Pro are cleaning and descaling agents recommended for all humidifiers. The decalcification ingredients clean the mineral build-up in the humidifier base.



Switch off the appliance and unplug it from the socket before cleaning the unit. Clean the water tank and the base regularly. Use water only, no detergents.



For best results, use EZCaI and EZCAL Pro cleaning agents to remove deposits from the humidifier base.



Do not submerge the base in water! Thoroughly rinse the base with tap water and make sure no EZCaI or EZCAL Pro residue remains in the base!

There is a sample of EZCaI included in the packaging of your humidifier!

Only use 1 packet for 32oz of water. Do not change the ratio. Thoroughly rinse the base with tap water and make sure no EZCaI residue remains in the base. Instructions for use are on the packet. Please note: EZCaI and EZCAL Pro are the only recommended cleaning and descaling solution. Do NOT use any other cleaning solutions since it can damage the product. Any use of cleaning solutions apart from EZCaI and EZCAL Pro will void the warranty.

EZCaI and EZCAL Pro descaling agents are available at selected retail stores and online at www.airoswiss.net.

TROUBLESHOOTING

Humidity level is not changing or does not reach the desired humidity level

- If the water tank needs refilling more than once per day, the unit is working properly and the climatic condition in the room has an influence on the humidity.

Reasons for low humidity level:

- air circulation is very high (air is fully exchanged several times per day - the humidifier needs to start its work from scratch)
- insulation of home (see air circulation)
- open space with high ceilings (not only the footage of the room counts but also the height) - high-rise buildings require more humidification.
- open windows - works similar to air circulation (if it is very cold outside don't open the window more than 2 times per day for 3 minutes)
- big difference between outside temperature and inside temperature - the colder the air the less moisture it is capable of holding. The more the air is heated up the lower the percentage of relative humidity (= the amount of water vapor in the air, compared to the amount the air could hold if it was totally saturated)
- position of the unit - if it is placed close to a door, window or air vent. This increases the air circulation.

Unit is not working

- If the unit is not working and the empty light is not flashing you might have set the desired humidity too low and the current humidity level in the room is higher. That is why the unit switches off automatically.
- Start the decalcification mode as described in manual page 12.

Unit is not running

Insert the plug fully into the unit! A sound from the unit indicates that the appliance is supplied with power.

Symbol E2 appears

When the display shows «E2», the current relative humidity has reached 90%. For safety reasons, the appliance switches off automatically. The appliance switches back on, when the relative humidity falls below 85%.

DO NOT DISCARD! Save for future reference.

Please read the manual or check our website www.airoswiss.net for further information.