



MADE IN GERMANY

SEBO AMERICA, LLC

SEBO PREMIUM FLOOR-CARE APPLIANCES . . . WORLD'S BEST!



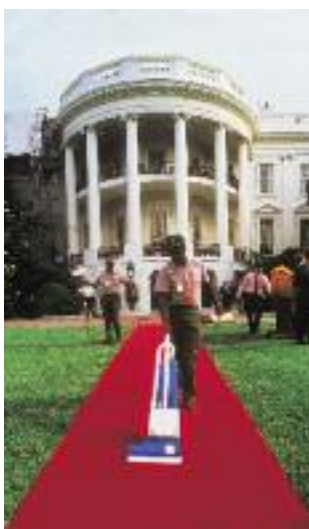
Reliability is Standard™

[www.sebo.us](http://www.sebo.us)



In 1978, two engineers founded SEBO in Velbert, Germany. Since then, SEBO has become the most important manufacturer of high-quality commercial vacuum cleaners in the world, with sales in Europe, Asia, Africa and North America. Millions of SEBO vacuums have been sold to hotels, hospitals, schools . . . even The White House!

SEBO's first shipment to the U.S.A. was in 1979 for commercial cleaning customers, followed by its duo-P Cleaning Powder in 1984, and its household vacuums were launched in 1997. Today, SEBO stands as a synonym for high-quality vacuums in commercial and retail markets worldwide.



## SEBO was the WORLD'S FIRST Vacuum Manufacturer to Introduce:

- An integrated suction hose on an upright vacuum.
- A timing-belt-driven brush with clutch protection.
- A dust bag that fills from the top, followed by a microfilter and then the motor.
- An electrostatic microfilter.
- An electronic brush control and safety shut off.
- A soft bumper on a canister vacuum, which protects furniture and walls from damage.
- An electronically controlled automatic height adjustment, S-class filtration, and a detail wand with telescopic hose. To this day, the most modern vacuum cleaner in the world!



## Buy Your New Vacuum with a Green and Clean Conscience!

There is more to being environmentally aware than just looking at energy ratings . . . friends of the environment also want their new appliances to be responsibly manufactured. Everyone knows to look for efficiency when it comes to buying new appliances for the home, but what about the amount of energy consumed in their production and distribution? Sometimes this can far exceed the energy used during the entire lifespan of a product.

Made in Germany, using locally sourced materials and components, SEBO vacuum cleaners are built to last and are manufactured in an environmentally responsible way that reduces waste and uses fewer resources. Plastic is recycled into new components, and the SEBO factory is completely self-sustaining with respect to electricity. Its combined heat and power system produces the electricity required to run the factory's machinery. The warm air and water created by the system's generators are then used to heat the factory and warehouse.

For SEBO, reducing the carbon footprint of a product starts in the initial design process. An important consideration is to ensure that products pack into the smallest possible cartons, and that carton sizes allow the maximum number of machines to fit on a pallet. Most SEBO packaging is made from unbleached recycled cardboard, and waste paper from the offices is shredded and re-used for packing. Even deliveries are carefully planned, to ensure delivery trucks are running economically and are filled to capacity.

Water resources are also conserved at the SEBO factory. Rainwater is collected from the roof, then filtered and stored, to be used in production and within the factory washrooms, saving the unnecessary use of treated drinking water.

The factory and offices are designed to use natural light as much as possible, avoiding artificial lighting and the associated power consumption. And work hours are scheduled to make use of daylight hours; this also improves the working environment for employees.



**Designed and Manufactured in Germany** – Legendary quality, reliability and performance make SEBO vacuums the choice of cleaning professionals and household users throughout the world.

**Save Money! SEBO's Last for Years and Extend Carpet Life!** – If properly maintained, SEBO vacuums save ordinary residential users hundreds of dollars by providing excellent performance for ten to fifteen years or more, and their deep-cleaning power-brush technology extends the life of carpets. Typical vacuums perform poorly, even when new, and usually do not last beyond two years. So six or seven "disposable vacuums" must be purchased during the average life expectancy of just one SEBO machine.

**Five-year Warranty Coverage** – All SEBO models include a five-year warranty on the motor and all non-wear parts and a one-year warranty on labor charges. The AUTOMATIC X vacuums include a lifetime warranty on the belts.



**Effective Pet Hair Removal** – All SEBO vacuums easily remove pet hair!



**Remarkably Quiet Operation** – Intelligent design and high-quality motors combine to provide amazingly quiet vacuums.

**Protective Rubber-coated Wheels** – SEBO's wheels protect all floor surfaces and provide smooth maneuverability.

**Changing Bags is Easy and Clean** – SEBO bags take just a few seconds to change, and a cap keeps dust sealed inside.

**SEBO Microfilters Ensure Continuously Strong Suction Performance** – They are also long lasting, inexpensive and easy to change in seconds. Choose S-class or HEPA filters . . . either type of filtration is an excellent choice!



**Effective Filtration Requires a Tightly Sealed Vacuum** – Dirty air, which flows through a vacuum, can only be filtered completely if it does not escape into the room through seams or seals in the machine. This is why all SEBO vacuums have tight seals throughout.

Many vacuum companies with high-filtration claims are actually quoting specifications made by the manufacturer of the filter material, as measured in the laboratory, not the filtration effectiveness of the vacuum itself while operating. Whether or not dirty air can escape through leaks in the body of the machine is not considered. The filtration effectiveness of SEBO vacuums is tested while they operate.

**Both S-class and HEPA Filters are Available** – S-class filters come standard on all SEBO vacuums, and HEPA filters are an option available for most models. They both remove 99.97% of particles down to 0.3 microns in size and 100% of particles of one micron and above. For comparison, 100 microns is the diameter of a human hair.

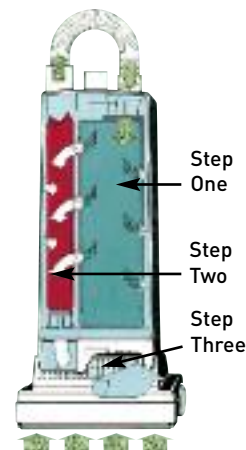
**Excellent for Users With Allergies or Asthma** – The British Allergy Foundation recommends SEBO filters.

## SEBO's THREE-STEP FILTRATION SYSTEM:

**Step One. Bags are Better!** – Top-fill bags are an integral part of SEBO's filtration system because they hold virtually all dirt captured by the vacuum, which improves the effectiveness and useful life of the microfilters. They also ensure continuously strong suction because dirt enters from the top, deposits at the bottom, accumulates upward, and air exits through the sides, which allows unimpeded airflow as they fill to capacity. And they can be sealed when full, so no dust can escape into the air during disposal.



In contrast, without bags to hold nearly all the captured dirt, the microfilters on bagless vacuums quickly clog from excessive dirt build-up and must be replaced often or a loss of suction and cleaning effectiveness will occur. In addition, dust and other allergens become airborne when emptying the bagless dirt containers. Lastly, bagless vacuum microfilters are expensive, usually costing more than a multi-year supply of SEBO filter bags.



**Step Two. S-class Microfilters** – S-class (S = "Schwebstoff" = airborne particles) filters are made from electrostatically charged micro-fiber material, which attracts and captures dust particles from the airflow of the vacuum. The S-class Standard requires filters to absorb greater than 99.9% of particles down to 0.3 microns in diameter. Their advantages are a relatively open texture that allows smoother airflow for better suction performance, a long-lasting life expectancy, and they typically cost less than HEPA filters. A charcoal S-class microfilter, designed for odor absorption, is also available for most models.



**Step Two. HEPA Microfilters (Optional)** – HEPA ("High Efficiency Particulate Air") filters remove a minimum of 99.97% of all airborne particulate matter down to 0.3 microns in diameter. Because these filters use small grid-like structures to capture dust particles, dirt build-up clogs the airflow pathway sooner than what is expected from S-class filters. However, SEBO's HEPA filters are sold along with four-layer "Ultra-bags," which provide highly effective filtration before the airflow goes through the HEPA filter, greatly increasing its life expectancy and reducing the potential for diminished air flow from blockages of the filter material.



**Step Three. Exhaust Filter** – The exhaust filter cleans the air emitted by the vacuum motor.

# SEBO AUTOMATIC X

**DESIGNED FOR CARPETS AND HARD FLOORS** – The AUTOMATIC X is the most technically advanced vacuum cleaner in the world! It features an electronic controller that acts as a brain, measuring the resistance of the brush roller against the floor and signaling the power head to adjust up or down to the appropriate brush height, to ensure optimum performance on both carpet and hard-floor surfaces. The controller also regulates a warning system that not only alerts the user to problems such as clogs, a worn brush, a full bag and brush roller obstructions, but it also automatically shuts off the vacuum, when necessary, to protect the motor and belts from damage. In addition, the AUTOMATIC X has a convenient instant-use cleaning wand and suction hose, and it comes with a lifetime belt warranty.

Refer to Page 3  
for the SEBO  
Standard Features  
also included with  
the AUTOMATIC X.



AUTOMATIC  
X4 White  
#9570AM

**Instant-use Wand and Suction Hose** – The integrated instant-use wand and suction hose are always ready. Just pull out either tool, or both together, to clean hard-to-reach corners, edges and crevices. The wand and hose together have an eight-foot reach. The suction hose is ideal for cleaning furniture. And an optional nine-foot extension hose is available, which creates a total hose length of 15 feet . . . perfect for cleaning stairs. Choose from a range of optional attachments that can be fitted to the wand or hose!



**A Low 5 1/2-inch Profile** – Lower the handle flat to the floor to clean under beds, or lower it to the intermediate stop position to maneuver over rugs. Depress the foot pedal again to bypass the intermediate stop position, or close this position by moving the orange handle-position slider.



AUTOMATIC  
X4 Spring Green  
#9574AM



AUTOMATIC  
X4 Blue  
#9577AM



AUTOMATIC  
X4 Onyx  
#9501AM



AUTOMATIC  
X5 Blue  
#9587AM



AUTOMATIC  
X5 White  
#9580AM



Orange Handle-  
Position Slider



AUTOMATIC  
X4 Red  
#9558AM

**Automatic Height Adjustment: From Hard Floors to Carpets –**

The electronic controller adjusts the power head up or down to the appropriate brush height, providing optimal cleaning of both carpets and hard floors. The “sealing strip,” located behind the brush, improves hard floor cleaning performance by channeling the airflow and preventing debris kickback.



**Brush Adjustment Indicator Lights –** Two green lights, one for “up” and one for “down,” illuminate to indicate when the power head is in the process of adjusting brush height to the proper cleaning level. Optimal cleaning effectiveness occurs when both lights are off.



**Brush Obstruction Light with Automatic Shut Off –** If an obstruction jams the brush roller, the red “check brush” warning light flashes quickly, the brush roller immediately stops spinning, and the vacuum shuts off. This feature prevents the belts from breaking and protects the motor and carpet from damage.


**Worn Brush Light. Easy Brush Removal and Cleaning –**

When the brush roller’s bristles are worn to a point that brush agitation is less effective, the red “check brush” warning light remains illuminated during use. (The vacuum continues to operate; it will not automatically shut off.) When needed, installing a new brush roller or cleaning hair or other debris from a used brush is quick and easy, and no tools are required!



**Stationary Use Light –** When the vacuum is stationary in its upright handle-locked position, the power head adjusts upward to the height necessary (or to its highest possible level) to disengage the spinning brush roller from the floor. However, if the brush remains in contact with carpet fibers, despite the power head’s upward adjustment, the red “check brush” warning light flashes to alert the user to avoid potential carpet marking from excessive use time in a stationary position. Usually, very high-pile carpets cause this situation, or the vacuum is tilted toward the brush roller while using the cleaning wand and/or hose. The solution is to tilt the locked upright handle backward such that the brush is raised above the carpet pile.

**Bag Full or Clog Light with Automatic Shut Off –** When a full bag, a clog in the airflow pathway, or an excessively dirty microfilter is detected, the red “bag full or clog” warning light illuminates, the vacuum automatically shuts off after 30 seconds, and then the warning light starts continuously flashing. This feature prevents overheating and motor damage from a lack of adequate airflow.

**Combination Carrying Handle with Rotating Cord Hook –** The AUTOMATIC X is easy to carry, or quickly unwind the cord, using its unique handle with integrated rotating cord hook.

**Three On-board Full-size Tools. Large Filter Bag –** The vacuum comes standard with a crevice tool, dusting brush, upholstery nozzle, and a large 1.4-gallon filter bag. Also, many optional accessories are available.



**Lifetime Belt Warranty –** Stop changing vacuum belts! With an AUTOMATIC X, they should last the life of the machine!

**Forty-foot Cord –** A 40-foot cord saves time, by reducing the number of electrical outlet changes needed during use.

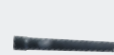
**Two Power Head Widths. One or Two-sided Edge Cleaning –** The AUTOMATIC X4 is 12 inches wide with a cleaning path of 10 ½ inches and one-sided edge cleaning. The AUTOMATIC X5 is 15 inches wide with a cleaning path of 14 ½ inches and two-sided edge cleaning.

**Easy Maintenance –** The clog removal door, brush, and replaceable hard floor “sealing strip” are easy to access.



## ATTACHMENTS

Included



Crevice Tool  
#1092DG



Dusting Brush  
#1329DG



Upholstery Nozzle  
#1491DG

Color Exception: X4 Onyx - Crevice Tool #1092SW & Upholstery Nozzle #1491SW

Optional



Radiator Brush  
#1496DG



Flat Upholstery  
Nozzle #1090HG



Wall & Floor Brush  
#1325HG



Hand-held Turbo  
Brush #6179DA

Optional Kit



20" Extension Wand\*  
#1084HG



9-Foot Extension Hose\*  
#1495AM



Parquet Brush\*  
#1359DG

\*All three items are available individually or as a three-piece attachment kit, #1991AM.

## BAGS, FILTERS & ACCESSORIES



12" Sealing Strip\*\*  
#5400-1 or a

15" Sealing Strip\*\*  
#5400-2

10 Filter Bags\*\*  
#5093AM

Exhaust Filter\*\*  
#5143



Electrostatic  
Microfilter\*\* #5036AM

\*\*All four items are also available as a Service Box #5828AM containing 10 Filter Bags, an Exhaust Filter, an Electrostatic Microfilter and a Sealing Strip.

Service Box  
#5828AM

HEPA Service Box #5827ER contains 8 Ultra Bags, an Exhaust Filter and a HEPA Microfilter.



HEPA Service  
Box #5827ER

X5 Brush Roller Set #5290AM

X4 Brush Roller  
#5010AM



Charcoal  
Anti-odor  
Microfilter  
#5425AM

SEBO FRESH  
1 Pkg. of 5  
#0496AM



# SEBO ESSENTIAL G

**DESIGNED FOR CARPETS** – The sturdy and lightweight ESSENTIAL G is a technically advanced upright vacuum. It features an electronic controller that acts as a brain, monitoring a warning system that not only alerts the user to problems such as clogs, a worn brush, a full bag, brush obstructions, and when brush height is set too high for optimum cleaning, but it also automatically shuts off the vacuum, when necessary, to protect the motor and belts from damage. And it offers manual brush height adjustment, years of reliability, a convenient instant-use cleaning wand and suction hose, and an exterior housing with a scratch and scuff-resistant matte finish.

Refer to Page 3  
for the SEBO  
Standard Features  
also included with  
the ESSENTIAL G.



ESSENTIAL  
G2 Teal  
#9592AT



**Instant-use Wand and Suction Hose** – The integrated instant-use wand and suction hose are always ready. Just pull out either tool, or both together, to clean hard-to-reach corners, edges and crevices. The wand and hose together have an eight-foot reach. The suction hose is ideal for cleaning furniture. And an optional nine-foot extension hose is available, which creates a total hose length of 15 feet . . . perfect for cleaning stairs. Choose from a range of optional attachments that can be fitted to the wand or hose!

**A Low 5 ½-inch Profile** – Lower the handle flat to the floor to clean under beds, or lower it to the intermediate stop position to maneuver over rugs. Depress the foot pedal again to bypass the intermediate stop position, or close this position by moving the orange handle-position slider.

ESSENTIAL  
G1 Teal  
#9591AT



Orange Handle-  
Position Slider

**Four-level Manual Brush Height Adjustment** – The brush height can be manually adjusted up or down for optimal cleaning effectiveness.

**Brush Obstruction Light with Automatic Shut Off** – If an obstruction jams the brush roller, the red “check brush” warning light flashes quickly, the brush roller immediately stops spinning, and the vacuum shuts off. This feature prevents the belts from breaking and protects the motor and carpet from damage.



**Incorrect Height Setting or Worn Brush Light** – When the brush height is set too high for optimal cleaning or when the brush roller should be replaced due to wear, the red “check brush” warning light remains illuminated during use. (The vacuum will not automatically shut off.) The light shuts off when the condition is corrected, ensuring consistently effective brush agitation of the carpet pile.

**Easy Brush Removal and Cleaning** – Cleaning hair or other debris from the brush roller or replacing it when its bristles are worn is quick and easy, and no tools are required! This feature ensures consistently effective brush agitation of the carpet pile.



**Bag Full or Clog Light with Automatic Shut Off** – When a full bag, a clog in the airflow pathway, or an excessively dirty microfilter is detected, the red “bag full or clog” warning light illuminates, the machine automatically shuts off after 60 seconds, and then the warning light starts continuously flashing. This feature prevents overheating and motor damage from a lack of adequate airflow.

**Soft Start Feature** – The vacuum’s gradual power-up capability extends motor life.

**Durable Matte Finish** – The ESSENTIAL G has an exterior housing with a special matte finish that is extra scratch and scuff-resistant, so it looks great even after years of use.

**Combination Carrying Handle with Rotating Cord Hook** – The vacuum is easy to carry, or quickly unwind the cord, using its unique handle with integrated rotating cord hook.

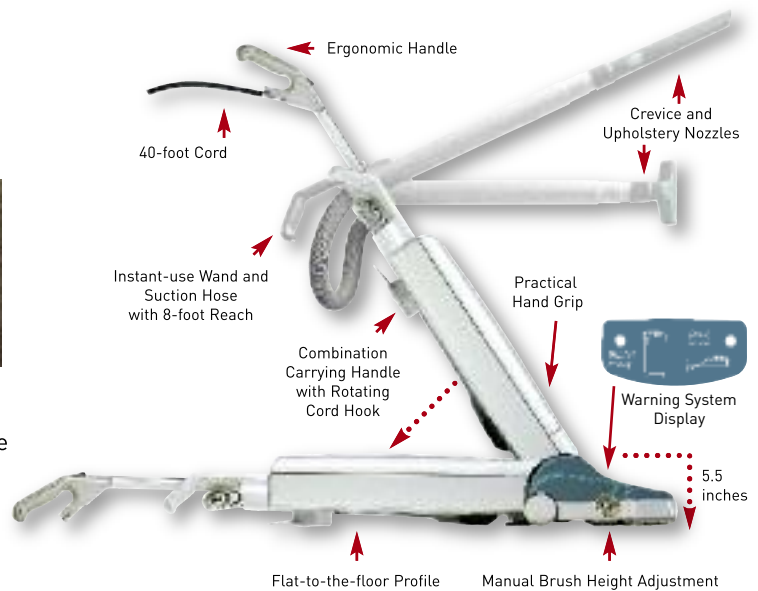
**Three On-board Full-size Tools. Large Filter Bag** – The ESSENTIAL G comes standard with a crevice tool, dusting brush, upholstery nozzle, and a large 1.4-gallon filter bag. Also, many optional accessories are available.



**Two Power Head Widths with One-sided Edge Cleaning** – The ESSENTIAL G1 is 12 inches wide with a 10 ½-inch cleaning path. The ESSENTIAL G2 is 15 inches wide with a 13 ¼-inch cleaning path. Both heads have one-sided edge cleaning.



**Durable Heavy-duty Belts** – The reinforced toothed belts do not slip or stretch, resulting in a more efficient use of power, and they should last the life of the machine.



**Forty-foot Cord** – A 40-foot cord saves time, by reducing the number of electrical outlet changes needed during use.

**Easy Maintenance** – The ESSENTIAL G’s clog removal door and brush roller are easy to access on the power head.



## ATTACHMENTS

Included				
	Crevice Tool #1092JE	Dusting Brush #1329DG	Upholstery Nozzle #1491JE	
	<hr/>			
Optional				
	Radiator Brush #1496DG	Flat Upholstery Nozzle #1090HG	Wall & Floor Brush #1325HG	Hand-held Turbo Brush #6179DA
Optional Kit				
	20' Extension Wand* #1084HG	9-Foot Extension Hose* #1495AM	Parquet Brush* #1359DG	
	*All three items are available individually or as a three-piece attachment kit, #1991AM.			

## BAGS, FILTERS & ACCESSORIES


# SEBO ELECTRONIC 370

**DESIGNED FOR CARPETS** – The heavy-duty ELECTRONIC 370, a two-motor vacuum with separate suction and brush motors, is SEBO's quietest upright vacuum! It is designed to provide many years of trouble-free operation and features an aggressive power head with manual brush height adjustment and a convenient instant-use cleaning wand and suction hose. In addition, the vacuum features an electronic controller that not only alerts the user to problems such as clogs, a worn brush, a full bag, brush obstructions, and when brush height is set too high for optimum cleaning, but it also automatically shuts off the brush roller when it is jammed to protect the motor and belt from damage. This is a perfect vacuum for large carpeted areas.

Refer to Page 3  
for the SEBO  
Standard Features  
also included  
with the  
ELECTRONIC 370.



**Instant-use Wand and Suction Hose** – The integrated instant-use wand and suction hose are always ready. Just pull out either tool, or both together, to clean hard-to-reach corners, edges and crevices. The wand and hose together have an eight-foot reach. The suction hose is ideal for cleaning furniture. And an optional nine-foot extension hose is available, which creates a total hose length of 15 feet . . . perfect for cleaning stairs. Choose from a range of optional attachments that can be fitted to the wand or hose!

**A Flat-to-the-floor 5 1/2-inch Profile** – Its low profile makes cleaning under furniture and beds easy!



ELECTRONIC  
370 Gray  
#9703AM



**Four-level Manual Brush Height Adjustment** – The brush height can be manually adjusted up or down for optimal cleaning effectiveness.

**Brush Obstruction Light with Automatic Brush Shut Off** –

If an obstruction jams the brush roller, an orange warning light on the power head illuminates, and the brush roller immediately stops spinning. This prevents the belt from breaking and protects the motor and carpet from damage.



**Incorrect Height Setting or Worn Brush Light** – When the brush height is set too high for optimal cleaning or when the brush strip should be replaced due to wear, an orange warning light, next to the green “on light,” remains illuminated during use. (The vacuum will not automatically shut off.) The light shuts off when the condition is corrected, ensuring consistently effective brush agitation of the carpet pile.



**Easy Brush Strip Removal and Cleaning** – Cleaning hair or debris from the brush strip or replacing it when the bristles are worn is quick and easy. This feature ensures consistently effective brush agitation of the carpet pile. The ELECTRONIC 370 has a brush roller with a replaceable brush strip. This is part of its heavy-duty sealed brushing mechanism, which provides extra rugged durability.



**Two-motor Design. Automatic Brush Shut Off During Stationary Use** – The ELECTRONIC 370 vacuum operates using two motors: a 1,000-watt motor for suction and a 150-watt motor to power the brush roller. Thus, when the handle is in the upright locked position, the vacuum's brush roller automatically shuts off, but suction remains on, so stationary cleaning using the wand and/or hose can be done for an extended period of time.

**Full Bag or Clog Warning Light** – When a full bag, a clog in the airflow pathway, or an excessively dirty microfilter is detected, a red warning light on the bag housing illuminates and an airflow bypass valve opens. This feature prevents overheating and motor damage from a lack of adequate airflow.



**Durable Heavy-duty Belts** – The reinforced toothed belts do not slip or stretch, resulting in a more efficient use of power, and they should last the life of the machine.

**Wide Power Head with One-sided Edge Cleaning** – The 14-inch wide power head with a 12 1/2-inch cleaning path is perfect for larger homes, and its L-shape provides excellent maneuverability around furniture and under cabinets. The extension side of the head cleans to the edge.

**Three On-board Full-size Tools. Large Filter Bag** – The ELECTRONIC 370 comes standard with a crevice tool, dusting brush, upholstery nozzle, and a large 1.4-gallon filter bag. Also, many optional accessories are available.



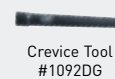
**Thirty Nine-foot Cord** – A 39-foot cord saves time, by reducing the number of electrical outlet changes needed during use.

**Combination Carrying Handle with Rotating Cord Hook** – The vacuum is easy to carry, or quickly unwind the cord, using its unique handle with integrated rotating cord hook.

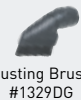


## ATTACHMENTS

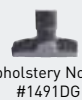
Included



Crevice Tool  
#1092DG



Dusting Brush  
#1329DG



Upholstery Nozzle  
#1491DG

Optional



Radiator Brush  
#1496DG



Flat Upholstery  
Nozzle #1090HG



Wall & Floor Brush  
#1325HG



Hand-held Turbo  
Brush #6179DA

Optional Kit



20" Extension Wand\*  
#1084HG



9-Foot Extension Hose\*  
#1495AM



Parquet Brush\*  
#1359DG

\*All three items are available individually or as a three-piece attachment kit, #1991AM.

## BAGS, FILTERS & ACCESSORIES



10 Filter Bags  
#5093AM



Exhaust Filter  
#1878



Electrostatic  
Microfilter #1875



Alternative  
Motor Filter #1825



370 Brush Strip  
#2046



SEBO FRESH  
1 Pkg. of 5  
#0496AM

# SEBO FELIX

**DESIGNED FOR CARPETS AND HARD FLOORS** – The stylish FELIX offers all the flexibility of a canister vacuum in an upright configuration! It has a "flex" neck with amazing maneuverability, an ultra-modern filtration system, a detachable suction unit that becomes a hand-held vacuum, and an instant-use suction hose. The power head deep cleans carpets or its brush can be shut off to clean delicate rugs. The FELIX also has a parquet brush for hard floors, or it can morph into a polisher using the DISCO head. The brush roller is removable, and a light illuminates if it is set too high or is worn, and it shuts off if jammed.

Refer to Page 3  
for the SEBO  
Standard Features  
also included with  
the FELIX.



**Instant-use Suction Hose** – The integrated instant-use suction hose is always ready! Just pull it out to clean corners, crevices or furniture. Two on-board tools and a range of optional attachments can be fitted to the hose, such as a wand for cleaning hard-to-reach areas or a nine-foot extension hose, which creates a total hose length of 15 feet . . . perfect for cleaning stairs.



**A Flat-to-the-floor 6-inch Profile** – The vacuum's low profile makes cleaning under furniture and beds easy!

**Two Power Head Widths with One-sided Edge Cleaning** – The FELIX 1 Premium model is 12 inches wide with a 10 1/2-inch cleaning path. The FELIX 2 Premium - Ice Blue is 14 1/4 inches wide with a 13-inch cleaning path.



FELIX 1  
Premium  
Onyx  
#9807AM



FELIX 2  
Premium  
Ice Blue  
#9813AM

FELIX 1  
Premium



Fun  
#9803AM



Ice Blue  
#9806AM



Classic  
#9804AM

FELIX 4  
Kombi



Fun  
#9825AM



Ice Blue  
#9824AM



Classic  
#9826AM





**Multi-surface Cleaning Capabilities** – With a power brush for carpets and a parquet brush for hard floors, the FELIX provides all the cleaning flexibility of a canister vacuum! It also morphs into a hard floor polisher, by adding a SEBO DISCO head.



**Four-level Manual Brush Height Adjustment** – The brush can be adjusted up or down for optimal cleaning effectiveness.

**Brush Obstruction Light with Automatic Brush Shut Off** – If an obstruction jams the brush roller, an orange warning light on the power head illuminates and the brush roller stops spinning. This feature prevents the belts from breaking and protects the motor and carpet from damage.

**Incorrect Height Setting or Worn Brush Light** – When the brush height is set too high for optimal cleaning or when the brush roller should be replaced because of wear, an orange warning light on the power head remains illuminated during use. The light shuts off when the condition is corrected.

**Easy Brush Removal and Cleaning** – Cleaning hair or other debris from the brush roller or replacing it when its bristles are worn is quick and easy, and no tools are required! This feature ensures consistently effective brush agitation of the carpet pile.



**Manual and Automatic Brush Shut Off** – The FELIX can gently clean delicate rugs or hard floors because the brush roller can be manually switched off, but suction remains on, by pressing the green illuminated on/off button on the power head cover. Also, the brush roller automatically shuts off when the suction hose is removed from its housing port or when the handle is in its upright locked position.

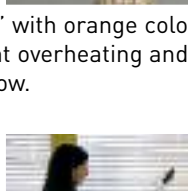
**Variable Suction Control on Handle with Soft Start** – The user can select the suction power needed, from curtains to carpet. And its gradual power-up extends motor life.



**Three-level Adjustable Handle** – This feature provides compact storage, maneuverability when suction unit is detached, and easy adjustment to user height requirements.



**Full Bag or Clog Indicator** – When a full bag, a clog in the airflow pathway, or an excessively dirty microfilter is detected, an indicator gauge on the bag housing lid “fills” with orange color and an airflow bypass valve opens, to prevent overheating and motor damage from a lack of adequate airflow.



**Detachable Suction Unit Creates a Hand-held Portable Vacuum** – By removing its power head, the FELIX instantly transforms from an upright floor vacuum into a handheld portable vacuum, ideal for cleaning stairs, upholstery and car interiors. It can be easily carried using its alternative side handle or its shoulder strap attachment.



**Superb Maneuverability** – A unique 180° turning swivel neck offers superb maneuverability around and under furniture.

**“FELIX Premium” Model Includes Power Head, Two On-board Tools and Parquet Brush** – Along with a commercial-quality power head, the FELIX Premium comes standard with a crevice tool, upholstery nozzle and a parquet brush.

**“FELIX Kombi” Model Includes Combination Nozzle and Two On-board Tools** – The FELIX Kombi does not have a power head. Instead, it includes a combination nozzle (a straight suction nozzle for hard floors and rugs), crevice tool and upholstery nozzle. The Kombi can accommodate a FELIX Premium power head, which can be purchased separately.

**Thirty-one Foot Cord with Rotating Quick-release Hook** – It is easy to quickly unwind the cord by rotating the hook!

**Easy Maintenance** – The clog removal door and brush roller are easy to access on the power head.

**Innovative Exhaust Filter . . . Design and Functionality** – Behind the stylish surface hides an ultra-modern S-class exhaust microfilter that not only provides excellent filtration, but it also absorbs motor noise, resulting in extremely quiet operation.



## ATTACHMENTS

Included	Premium	Crevice Tool #1092DG	Upholstery Nozzle #1491DG	Parquet Brush #7200DG	Onyx & Ice Blue #7200DG / Fun #7200V0 / Classic #7200SR
	Kombi	Crevice Tool #1092DG	Upholstery Nozzle #1491DG	Kombi Nozzle #7240DG	Ice Blue #7240DG / Fun #7240V0 / Classic #7240SR
Optional		Radiator Brush #1496DG	Flat Upholstery Nozzle #1090HG	Wall & Floor Brush #1325HG	Hand-held Turbo Brush #6179DA
	Optional Kit	20" Extension Wand* #1084HG	9-Foot Extension Hose* #1495AM	Dusting Brush* #1329DG	

\*All three items are available individually or as a three-piece attachment kit, #1998AM.

## BAGS, FILTERS & ACCESSORIES

10 Filter Bags #7029ER	Motor Filter #7012ER	Exhaust Microfilter Fun #7095ER01	Exhaust Microfilter Ice Blue #7095ER02
SEBO FRESH 1 Pkg. of 5 #0496AM	FELIX Shoulder Strap #7158	Exhaust Microfilter Classic #7095ER03	Exhaust Microfilter Onyx #7095ER04
		12" Brush Roller #5010AM	15" Brush Roller #2838AM

# SEBO DISCO FLOOR POLISHER

**DESIGNED FOR POLISHING SPECIFIED HARD FLOORS** – The DISCO floor polisher head is lightweight, easy to operate, and very low cost compared to alternative polishing machines. It features a new floor-pad technology that provides a high-gloss shine to many types of hard floors without the use of water, chemicals or polishing sands. And its drive disc has instantaneous height adjustment, along with automatic shut off caused by disc obstructions or suction blockages. The DISCO attaches to the SEBO FELIX vacuum; therefore, it has a suction capability that simultaneously removes the fine dust created during the polishing process. The DISCO is truly a revolution in hard-floor care!



Coming Soon . . .  
SEBO's New and  
Innovative  
SEBO DISCO  
Polisher!

## DISCO FEATURES INCLUDE:

- A quick and easy pad-change mechanism.
- Automatic torque-controlled height adjustment of the floor pad, in relation to the floor surface, ensures consistent and optimal performance.
- Automatic safety shut off caused by disc obstructions or suction blockages.
- Lightweight, low-cost, commercial-grade machine.
- Bumpers to protect walls, furniture and the polisher.
- Three rubber-coated wheels to protect floor surfaces.
- Agile and easy to use, due to a highly maneuverable swivel neck and high-quality castors.
- A convenient machine width of 13 inches and a polishing path of 11 3/4 inches.
- The complete modular system includes a vacuum cleaner and a hard-floor polisher.
- Immediate retention of polishing dust by the suction unit.
- Reinforced drive disc that provides optimal floor contact and a speed of 2,000 rpm.



FELIX  
Kombi Ice Blue  
#9824AM with DISCO  
Polisher Head  
White #9430AM



DISCO White  
#9430AM



DISCO Onyx  
#9433AM



DISCO Orange  
#9431AM



The **SEBO DISCO Floor Polisher** – introduces a new sophisticated and highly efficient floor-pad technology that produces a high-gloss effect without the use of water, chemicals or polishing sands. The new pad technology achieves its results by using four different floor pads, each of which is designed to accomplish distinctly different tasks. The pads are color-coded to assure proper selection. In addition, they are highly abrasion resistant and have a life expectancy of over 100,000 square feet.

The DISCO is usually suitable for the following types of floors:

- PVC (coated or uncoated vinyl or vinyl composite tiles).
- Natural stone, such as granite, marble or terrazzo.
- Acrylic or polyurethane-coated floors.
- Hardwood with oil or varnish finishes.
- Hardwood or other floors with soft-coated finishes, like wax (use the blue floor pad only).

The **Red, Yellow and Green Floor Pads** – restore the shine of dull, scratched and scuffed hard-floor surfaces without the use of water, chemicals or polishing sands. The pads do the work using the following three-step procedure (soft coatings should not be present):

- **Step One. The Red Floor Pad** – removes the deepest or most visible scratches and smoothes the floor surface. Thus, it prepares the floor for the yellow pad.
- **Step Two. The Yellow Floor Pad** – restores a higher gloss finish and prepares the floor surface for the green pad.
- **Step Three. The Green Floor Pad** – creates the final gloss finish in the “three-step process,” and it is suitable for daily use to maintain the floor’s high-gloss finish.

The **Blue Floor Pad** – is designed to maintain soft coatings, like wax, on hard floors, and it is suitable for daily use as well. It should be used along with a typical floor wax suitable for the specific floor surface or recommended by the flooring manufacturer. And because the DISCO has suction ability while polishing, it removes the fine dust from **fully dried** floor-wax products.

The DISCO is **NOT** suitable for the following types of floors:

- Any floor on which a shiny finish is not desired.
- Glazed, ceramic and porcelain tiles, or porous tiles such as terracotta or slate.
- Cushioned vinyl, linoleum, laminate, and any floor types that are poorly bonded to the sub-floor.
- All floors with textured or uneven surfaces or tiles with raised edges.
- Floors with maintenance-free coatings, floors in which acceptability of the polisher is uncertain, or when polisher use is contrary to manufacturer recommendations.

Typically, maintaining the shine of hard floors is difficult, due to the following problems:

- Small and medium-size furnished hard-floor areas do not easily accommodate typical polishers.
- Big, heavy, hard-floor polishing machines are difficult to use, require trained staff and are expensive.
- Regular maintenance of hard floors is costly and time consuming.
- Typical hard-floor polishers have limited flexibility and mobility.
- Most hard-floor polishers cannot reach small areas.
- Correct use of floor-care chemicals and polishing sands is difficult and requires sophisticated knowledge.

The DISCO Polisher is the solution to all of these problems, and it is built to commercial-quality standards!

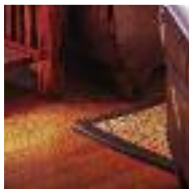


**\* PLEASE NOTE:** Suitability of all floor surfaces should first be determined by consulting the manufacturer recommendations, and then by testing the DISCO and its four pads in an inconspicuous spot. If floor damage occurs, immediately discontinue use.



In addition to the Standard Features shown on Page 3, SEBO's AIRBELT C & K vacuums also come with the following Canister Standard Features:

**Cleans Carpets and Hard Floors –** With a power brush to clean carpets and a parquet brush to clean hard floors, the SEBO AIRBELT C3.1 and AIRBELT K3 provide all the flexibility needed to care for a variety of floor surfaces.



**High-quality Telescopic Tube and Hose –** On the AIRBELT C3.1 and K3 vacuums, the power cords are built inside the telescopic tubes and suction hoses. This eliminates unsightly external wires and enables unobstructed and convenient handle height adjustment.



**Comfortable Ergonomic Handle –** AIRBELT vacuum handles are ergonomically designed and positioned to reduce wrist and arm fatigue. For extra comfort, an additional swivel is built into the handle-to-hose connection.



AIRBELT C3.1 and K3 Handle

**Quick-release Connections –** The AIRBELT C and K vacuums allow for quick and convenient connection of telescopic tubes, power brush heads, accessory cleaning nozzles and on-board tools.



**Powerful Vacuum Motors Provide Excellent Cleaning –** The canister suction motor is 1,250 watts and the power head motor is 175 watts (ET-1 model), for a total of 1,425 watts.

**Rubber-coated Wheels with High-quality Castors –** The wheels and castors on SEBO canisters prevent damage to floors and smoothly rotate 360° for easy maneuverability.



AIRBELT K3 and K2



**Manual Brush Roller Shut Off –** The ET-1 and ET-2 power heads can provide gentle brushless cleaning of delicate rugs or hard floors because their brush rollers can be manually switched off, but suction will continue.



**Three Types of Brush Height Adjustments –** The ET-1 and ET-2 power heads offer four-level manual brush height adjustment, the ET-C power head has "floating style" brush adjustment, and the ET-H features variable brush pressure adjustment.



**Personalized Vacuums –** The AIRBELT C and K canisters can be personalized with a replacement AIRBELT bumper cover, available in the following eight patterns and colors.



**The "AIRBELT" Bumper Protects Walls and Furniture and Diffuses Exhaust Air –**

The soft bumper that surrounds both the AIRBELT C and K canisters protects furniture, walls, and the vacuum itself from incurring scuffs and scratches during use. The bumper also serves to diffuse filtered exhaust air, as it exits the vacuum through hidden ports beneath the bumper's soft textile cover. This design provides an ultra-quiet gentle flow of exhaust air.



AIRBELT C3.1 and C2.1



# SEBO POWER HEADS . . . Your Choice with the SEBO AIRBELT C3.1 Canister!

**DESIGNED TO VACUUM CARPETS AND HARD FLOORS** – SEBO power heads are recognized worldwide as the most reliable and best designed on the market. They are virtually maintenance free and feature warning systems and automatic shut off capabilities designed to protect the machine and assure optimum performance. Brush roller removal is quick and easy, so it can be cleaned or replaced if the bristles are worn, ensuring consistently effective brush agitation. They also offer electronic overload protection that extends belt life by shutting off power if an obstruction jams the brush roller. And do not worry about pet clean up. All SEBO power heads easily remove pet hair!

**The SEBO ET-1** (12 inches wide, 10 ½-inch cleaning path) and **ET-2** (14 ¾ inches wide, 13-inch cleaning path) – This model comes in two widths and has four-level manual brush height adjustment. It aggressively cleans carpets, but the brush roller may be switched off, by pressing the green illuminated on/off button, to clean delicate rugs and hard floors. Its amazing steering ability provides maneuverability around furniture, and the L-shaped head makes edge cleaning easy. It also has easy brush roller removal, a convenient clog removal door, and an orange warning light with automatic shut off for brush roller obstructions. Its warning light also remains illuminated during use when brush height is set too high for optimal cleaning or when the brush should be replaced because of wear. The extension side of the head cleans to the edge.

**The SEBO ET-C** (14 inches wide, 12 ½-inch cleaning path) – This power head was designed to clean carpets. It delivers unmatched durability and aggressive brush agitation. The ET-C has a brush roller with a replaceable brush strip. This is part of its heavy-duty sealed brushing mechanism, but the brush cannot be manually switched off. The L-shaped head helps maneuverability around furniture. However, its steering mechanism does not rotate left or right. The ET-C features an orange brush obstruction warning light along with automatic shut off. The warning light, located next to the green “on light,” remains illuminated during use when brush agitation is not cleaning optimally, i.e., its brush strip should be replaced because of wear. It has “floating style” brush height adjustment, and the extension side of the head cleans to the edge.



ET-C White  
#9254AM

**The SEBO ET-H Power Head** (11 ¾ inches wide, 11 ½-inch cleaning path) – This model's T-shaped head offers two-sided edge cleaning and variable brush pressure adjustment for optimal cleaning of carpets and hard floors. However, its brush roller cannot be manually switched off. The ET-H's maneuverable steering mechanism helps to easily clean around obstacles. If an obstruction jams the brush roller, an orange warning light, located next to the green “power light,” illuminates and the brush roller immediately stops spinning. This prevents the belt from breaking and protects the motor and carpet from damage. It also has easy brush roller removal and a convenient clog removal door.



ET-H White  
#9256AM



ET-H Red  
#9257AM



ET-1 White  
#9258AM



ET-1 Red  
#9299AM



ET-1 Ivory  
#9273AM



ET-1 Onyx  
#9951AM



ET-1 Orange  
#9272AM



ET-1 Brush Roller  
Removal



ET-2 White  
#9259AM



ET-2 Red  
#9250AM



Central Vacuum Adapter  
#2780AM

The ET-1, ET-2 and ET-H swivel necks rotate 180° for unmatched maneuverability.

SEBO's Central Vacuum Adapter fits on any SEBO power head and can attach to most existing central vacuum wands.



## BRUSH ROLLERS and STRIPS



ET-1 Brush Roller  
#5010AM



ET-2 Brush Roller  
#2838AM



ET-H Brush  
Roller Set  
#2758ER



ET-C Brush Strip  
#2046

# SEBO AIRBELT C

**DESIGNED FOR CARPETS AND HARD FLOORS** – The AIRBELT C model is a full-size canister vacuum featuring a large filter bag, three full-size on-board attachments, superb castors for smooth maneuverability, rubber-coated wheels to protect floor surfaces, remarkably quiet operation, quick-release connections, a full bag or clog warning light, and a soft bumper to protect the vacuum, furniture and walls from scuffs and scratches. The AIRBELT C3.1 version also offers a commercial-quality power head, a durable telescopic tube with an internal power cord, and variable suction control on a comfortable ergonomic handle.

Refer to  
Pages 3 and 14  
for the SEBO  
Standard Features and  
Page 15 for the  
Power Heads  
Available for the  
AIRBELT C3.1.

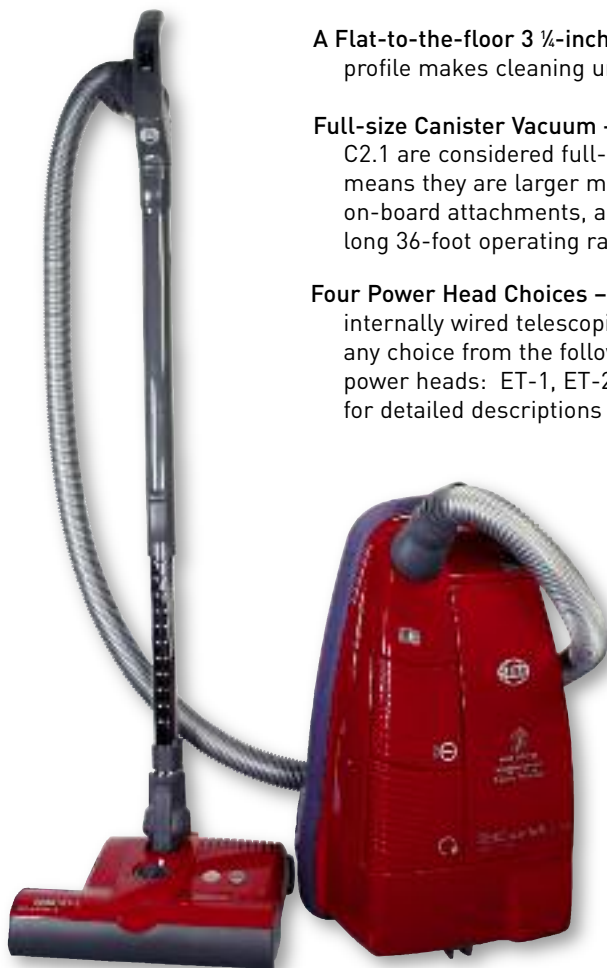


AIRBELT C3.1  
White  
#9630AM  
with ET-H White  
#9256AM

**A Flat-to-the-floor 3 1/4-inch Profile** – The vacuum's low profile makes cleaning under furniture and beds easy!

**Full-size Canister Vacuum** – The SEBO AIRBELT C3.1 and C2.1 are considered full-size canister vacuums, which means they are larger machines that offer three full-size on-board attachments, a large 1.4-gallon filter bag, and a long 36-foot operating range.

**Four Power Head Choices** – The AIRBELT C3.1 vacuum has an internally wired telescopic tube designed to accommodate any choice from the following four commercial-quality power heads: ET-1, ET-2, ET-C and ET-H. (See page 15 for detailed descriptions of all four models.)



AIRBELT C3.1  
Red  
#9652AM  
with ET-1 Red  
#9299AM





## AIRBELT C3.1

### Variable Suction Control on Handle –

The vacuum's suction power can be adjusted from 0 to 1,250 watts by a slider switch conveniently located on the handle of the C3.1, providing convenient suction control for normal to more delicate cleaning tasks.



### Three On-board Full-size Tools. Large

**Filter Bag** – The AIRBELT C models come standard with a crevice tool, dusting brush and upholstery nozzle. Also, many optional attachments are available that can be fitted to the telescopic tube or the hose handle. The filter bag is SEBO's largest, with a dirt capacity of 1.4 gallons.



**Large Operating Range** – A 36-foot operating range, with a 22-foot cord, saves time because it minimizes the number of electrical outlet changes needed during use.

**Large On/Off and Cord Rewinder Switches** – The on/off and cord rewriter control switches are large, so a hand or a foot can conveniently operate them.

**Full Bag or Clog Light** – When a full bag, a clog in the airflow pathway, or an excessively dirty microfilter is detected, an orange warning light, next to the green "on light," on the canister body illuminates and an airflow bypass valve opens. This feature prevents overheating and motor damage from a lack of adequate airflow.



## AIRBELT C2.1

The SEBO AIRBELT C2.1 is a straight-suction vacuum. Thus, it differs from the AIRBELT C3.1 in the following ways:

**Turbo Brush. No Power Head** – The AIRBELT C2.1 has a telescopic tube and hose without a power cord; therefore, it does not accommodate an electric power brush. Instead, it comes standard with an air-driven turbo brush for cleaning rugs and carpet. And, like the C3.1, it comes standard with a parquet brush for cleaning hard floors.



### Variable Suction Control on Canister Body –

Because the AIRBELT C2.1 has a hose and handle without a power cord, its variable suction control switch is located on the canister body, not the handle.



### ATTACHMENTS

Your choice of ET-1, ET-2, ET-C or ET-H power head for C3.1 plus the following:

Included	C3.1	Crevice Tool #1092DG	Dusting Brush #1329DG	Upholstery Nozzle #1491DG	Parquet Brush #6391DA
	C2.1	Crevice Tool #1092DG	Dusting Brush #1329DG	Upholstery Nozzle #1491DG	TT-C Turbo Brush #6780ER
Optional		Wall & Floor Brush #1325HG	Hand-held Turbo Brush #6179DA	Kombi Nozzle #7260DG	Parquet Brush #6391DA
		TT-C Turbo Brush #6780ER	9-Foot Extension Hose #1495AM	20" Extension Wand #1084HG	
		Premium Parquet Brush #7200DG	Flat Upholstery Nozzle #1090HG	Radiator Brush #1496DG	

### BAGS, FILTERS & ACCESSORIES

Exhaust Microfilter* #6033AM	10 Filter Bags* #5093AM	Service Box #6198AM	HEPA Service Box #6432ER contains 8 Ultra Bags, an Exhaust Microfilter, and a HEPA Microfilter.
Microfilter* #6191AM			
ET-1 Brush Roller #5010AM	ET-H Brush Roller Set #2758ER	Anti-odor Exhaust Microfilter #6108AM	SEBO FRESH 1 Pkg. of 5 #0496AM
ET-2 Brush Roller #2838AM	ET-C Brush Strip #2046		
AIRBELT COVERS 8 Choices #6047AM/01 to 08			



AIRBELT C2.1  
Teal  
#9648AM  
with included  
TT-C Turbo Brush  
#6780ER

# SEBO AIRBELT K

**DESIGNED FOR CARPETS AND HARD FLOORS** – The AIRBELT K model is a mid-size, powerful and lightweight canister vacuum featuring clever storage of its three on-board attachments, easy bag changes, remarkably quiet operation, rubber-coated wheels to protect floor surfaces, quick-release connections, a full bag or clog warning light, and a soft bumper to protect the vacuum, furniture and walls from scuffs and scratches. The AIRBELT K3 version also offers a commercial-quality power head, a durable telescopic tube with an internal power cord, and variable suction control on a comfortable ergonomic handle.

Refer to  
Pages 3 and 14  
for the SEBO  
Standard Features  
also included with the  
AIRBELT K3 and K2.



**A Flat-to-the-floor 3 1/4-inch Profile** – The vacuum's low profile makes cleaning under furniture and beds easy!

**Mid-size Canister Vacuum** – The SEBO AIRBELT K3 and K2 are considered mid-size canister vacuums, which means they are small or compact machines. They offer one mid-size and two full-size on-board attachments, a .8-gallon filter bag, an operating range of 32 feet, and the K-model canisters weigh four pounds less than SEBO's C-model canisters.

## Durable, Maneuverable and Technically Advanced Power Head –

The AIRBELT K3 comes standard with SEBO's ET-1 power head. It is 12 inches wide, with a 10 1/2-inch cleaning path, and offers four-level manual brush height adjustment. Also, for delicate cleaning tasks, the brush can be manually switched off, but suction will continue. Its steering ability provides amazing maneuverability. It also has easy brush removal, a handy clog removal door, and an orange warning light with automatic shut off for brush roller obstructions. The warning light also remains illuminated during use when brush height is set too high for optimal cleaning or when the brush should be replaced because of wear.



AIRBELT K3  
Red  
#9687AM

AIRBELT K3  
Onyx  
#9688AM



AIRBELT K3  
Volcano  
#9689AM

## AIRBELT K3

### Variable Suction Control on Handle –

The vacuum's suction power can be adjusted from 0 to 1,250 watts by a slider switch conveniently located on the handle of the K3, providing convenient suction control for normal to more delicate cleaning tasks.



### Three On-board Tools –

The SEBO AIRBELT K models come standard with a crevice tool, dusting brush and upholstery nozzle.

Also, many optional attachments are available that can be fitted to the telescopic tube or the hose handle.



### Large Operating Range –

A 32-foot operating range, with a 20-foot cord, saves time because it minimizes the number of electrical outlets needed during use.

### Tug and Retract Cord Rewinder –

The AIRBELT K models offer a "tug and retract" cord rewriter, instead of a control switch cord rewriter, which is offered on the AIRBELT C models.

### Full Bag or Clog Light –

When a full bag, a clog in the airflow pathway, or an excessively dirty microfilter is detected, an orange warning light, next to the green "on light," on the canister body illuminates and an airflow bypass valve opens. This feature prevents overheating and motor damage from a lack of adequate airflow.



AIRBELT K2  
Midnight Blue  
#9679AM  
includes a Kombi  
Nozzle #7260DG



AIRBELT K2  
Hunter Green  
#9696AM

Optional Premium Parquet Brush  
with Rubber-coated Wheels  
#7200DG

## AIRBELT K2

The Two SEBO AIRBELT K2 models are straight-suction vacuums. Thus, they differ from the AIRBELT K3 as follows:

### Turbo Brush or Kombi Nozzle. No Power Head –

AIRBELT K2 models have telescopic tubes and hoses without power cords, so they do not accommodate electric power brushes. Instead, the K2 Hunter Green comes with an air-driven turbo brush for cleaning carpet and a parquet brush, like the K3, for cleaning hard floors. The K2 Midnight Blue comes with one cleaning head, the Kombi Nozzle, for use on hard floors and rugs.



### Variable Suction Control on Canister Body –

Because the AIRBELT K2 has a hose and handle without a power cord, its variable suction control switch is located on the canister body, not the handle.



### ATTACHMENTS

		ET-1 Power Head included with K3 model vacuum. Colors: Onyx (shown), Red and Orange			
Included	K3	Crevice Tool #1092DG	Dusting Brush #1329DG	Upholstery Nozzle #6627DG	Parquet Brush #6391DA
	K2 Midnight Blue	Crevice Tool #1092DG	Dusting Brush #1329DG	Upholstery Nozzle #6627DG	Kombi Nozzle #7260DG
	K2 Hunter Green	Crevice Tool #1092DG	Dusting Brush #1329DG	Upholstery Nozzle #6627DG	Parquet Brush #6391DA
Optional		Wall & Floor Brush #1325HG	Hand-held Turbo Brush #6179DA	Radiator Brush #1496DG	TT-C Turbo Brush #6780ER
		Kombi Nozzle #7260DG	20" Extension Wand #1084HG	9-Foot Extension Hose #1495AM	TT-C Turbo Brush #6780ER
		Premium Parquet Brush #7200DG	Parquet Brush #6391DA	Flat Upholstery Nozzle #1090HG	

### BAGS, FILTERS & ACCESSORIES

Microfilter Set* #6696AM	8 Filter Bags* #6629AM	*All three items are also available as a Service Box #6695AM containing 8 Filter Bags, an Exhaust Microfilter and a Microfilter.	Service Box #6695AM	HEPA Service Box #6431ER contains 8 Ultra Bags, an Exhaust Microfilter and a HEPA Microfilter.
ET-1 Brush Roller #5010AM	AIRBELT COVERS 8 Choices #6047AM/01 to 08	SEBO FRESH 1 Pkg. of 5 #0496AM		



## SEBO duo CLEANING SYSTEM

**DESIGNED TO DRY CLEAN CARPET AND UPHOLSTERY** – SEBO's easy-to-use duo Cleaning System effectively cleans large or small carpeted areas and removes stubborn stains from upholstery and carpets. The duo-P Powder and Brush Machine can easily clean a house full of carpeting! This do-it-yourself system keeps strangers out of your home, saves money, and avoids potential carpet damage caused by most wet cleaning methods. The duo Daisy and Hand Brush quickly clean high-traffic areas and stairs.

The duo System consists of the following four components, which are all sold separately:

- 1) The duo-P Carpet and Upholstery Cleaning Powder.
- 2) The duo Brush Machine for cleaning large carpeted areas.
- 3) The duo Daisy Brush for cleaning small to medium-size carpeted areas, like hallways.
- 4) The duo Hand Brush for cleaning spots, stairs and hard-to-reach areas.

Advantages of using the duo System are:

- Do-it-yourself carpet cleaning saves money and time and keeps strangers out of your home.
- Avoids potential damage caused by most wet cleaning methods.
- Almost immediate use of the carpet or upholstery.
- Eliminates dust mite allergens.
- No need to move furniture and easily cleans stairs.
- No carpet shrinking or mildew.
- No detergent residue.
- A built-in fiber protector helps to protect against future stains and soil.

### Step One



Apply duo-P Cleaning Powder.

### Step Two



Spot-clean stubborn stains. (Older or more stubborn stains may require additional treatments.)

### Step Three



Brush in the duo-P Powder with the duo Brush Machine, Daisy or Hand Brush.

### Step Four



Vacuum when dry, usually after 30 minutes.



Before



After



SEBO duo Brush Machine #9401AM



SEBO duo replacement brushes #3005ER



### SEBO duo-P Cleaning Powder Cleans Carpet and Upholstery

– This amazing powder cleans carpets or upholstery to like new condition and removes even the most stubborn stains! It is made of polyurethane granules moistened with a cleaner and is environmentally friendly and safe to use. And, unlike other cleaning powders, no “pre-spray” is needed. (Tightly seal partially used packages after opening to maintain moisture.)



duo-P Clean Box with built-in Spot Brush. Contains one 1.1 lb. bag. #0478AM

When the powder is worked into the carpet fibers, the moistened sponge-like granules lift soil and stains out. Within about 30 minutes, the powder is dry and is removed by vacuuming, leaving the carpet or upholstery clean, dry and ready for use.



Refill package contains five, 1.1 lb. refill bags. Each single 1.1 lb. pack can clean up to 250 square feet of carpet. #0472AM

Because this is a DRY-cleaning process, duo-P Powder WILL NOT PROMOTE THE GROWTH OF MOLD AND FUNGUS in your carpet and pad that wet extraction systems may cause. And the GAF allergy research center in Germany found that six months after a single cleaning with duo-P, seven out of ten carpets remained free of dust mite allergens.



duo Hand Brush #6392

### The duo Brush Machine Cleans Large Carpeted Areas

– SEBO's duo Brush Machine features two spinning brushes that open the carpet pile, enabling the duo-P Powder to clean each fiber. Weighing only 11 pounds, it is lightweight and easy to use. And with a brush path width of 12 ½ inches, an entire house or a room of carpet can be quickly cleaned.

### The duo Daisy Brush Provides Quick Convenient Carpet Cleaning

– This duo accessory is a necessity! The Daisy is a single brush and is not motorized. However, it is the ultimate in convenience because, with its adjustable handle and very light weight, one can work in a comfortable upright position and clean both small and medium-size carpeted areas, such as hallways or an entire room. It can also be used to clean the carpet and upholstery in cars, boats and RV's. The



Daisy even offers two brush bristle options for different types of carpet: easy or aggressive. Its adjustable handle accommodates user height preferences and enables it to be stored in small spaces.

**Why Use Dry Cleaning?** – Wet cleaning methods inject water and detergent into the carpet pile under pressure, and an extractor is used to collect the liquid and dissolved soil. It is impossible to remove all of the water and dissolved soil from a wet carpet. Many machines only remove 50% of the dirty water, so much of the remaining water soaks into the pad. Often, this amount of moisture will cause deterioration of the carpet backing, and a wet carpet may take 8 to 36 hours to dry, depending on humidity. That is long enough for mold spores to grow. Also, carpets may re-soil quickly because of residual detergent, and spots may reappear in a short period of time, as the moisture and dissolved soil “wicks up” through the carpet fibers.

## SPECIFICATIONS

## UPRIGHTS

## CANISTERS

## DRY CLEANING

	AUTOMATIC X	ESSENTIAL G	ELECTRONIC 370	FELIX	AIRBELT C	AIRBELT K	duo Brush Machine
Suction Motor	1300 Watts	1300 Watts	1000 Watts	1300 Watts	1250 Watts	1250 Watts	n/a
Brush Motor	n/a	n/a	150 Watts	175/200 Watts	150/175/200	150/175/200	200 Watts
Airflow (motor rating)	103.8 CFM	103.8 CFM	106.0 CFM	102.0 CFM	170 CFM	120 CFM	n/a
Water Lift (motor rating)	92 in.	92.5 in.	80.3 in.	90 in.	90 in.	110 in.	n/a
Belt Guarantee	Lifetime	5 Years	5 Years	5 Years	5 Years	5 Years	5 Years
Height Adjustment	Electronic	Manual	Manual	Manual	Options	Manual	Floating
Suction Motor Protection	Electronic	Electronic	Thermal	Thermal	Thermal	Thermal	n/a
Bag Capacity	1.4 gal.	1.4 gal.	1.4 gal.	.92 gal.	1.4 gal.	.8 gal.	n/a
Handle Weight	1.5 lbs.	1.5 lbs.	3 lbs.	3 lbs.	1.5 lbs.	1.5 lbs.	0.8 lbs.
Body Weight	16.7/16.9 lbs.	16.9/17.1 lbs.	19 lbs.	15.4 lbs.	16 lbs.	12 lbs.	11 lbs.
Variable Suction Control	No	No	No	Yes	Yes	Yes	n/a
Bare Floor Cleaning	Yes	No	No	Yes	Yes	Yes	n/a
Dusting Brush Included	Yes	Yes	Yes	No	Yes	Yes	n/a
Cleaning Wand Included	Yes	Yes	Yes	No	Yes	Yes	n/a
Cord Length/Range	40 ft.	40 ft.	39 ft.	31 ft.	22 ft./36 ft.	20 ft./32 ft.	40 ft.
Power Head Width	12 in./15 in.	12 in./15 in.	14 in.	12 in./14 ¾ in.	11 ¾ -14 ¾ in.	12 in.	14 in.
Hose Length	6 ft.	6 ft.	6 ft.	6 ft.	7 ft.	7 ft.	n/a
S-class Filtration	Yes	Yes	Yes	Yes	Yes	Yes	n/a
Adjustable Handle	No	No	No	Yes	Yes	Yes	No
HEPA Filtration Available	Yes	Yes	No	No	Yes	Yes	n/a
Use Without Power Head	No	No	No	Yes	Yes	Yes	n/a
Brush Height Settings	Automatic	4	4	4	Options	4	Floating
Brush Wear Compensation	Automatic	Manual	Manual	Manual	Options	Manual	No
Brush Speed	3100 RPM	3100 RPM	2700 RPM	2700 RPM	2700 RPM	2700 RPM	400 RPM
Sound Level	69 dBA	69 dBA	66.1 dBA	68 dBA	63 dBA	63 dBA	Not Available

# COMPATIBILITY GUIDE

Use this guide to determine the compatibility of bags, filters and attachments to your selection of a SEBO vacuum.

Compatible bags, filters, attachments and accessories are also displayed in each product-specific section herein.



Hand-held Turbo Brush #6179DA



20" Extension Wand #1084HG



9-Foot Extension Hose #1495AM



10 Filter Bags #5093AM



Service Box #5828AM



duo Hand Brush #6392



duo-P Clean Box with built-in Spot Brush. Contains one 1.1 lb. bag. #0478AM

		AUTOMATIC X4	AUTOMATIC X5	ESSENTIAL G1	ESSENTIAL G2	ELECTRONIC 370	FELIX	AIRBELT C	AIRBELT K
#1825	Alternative Motor Filter - 370					●			
#1875	Microfilter - 370					●			
#1878	Exhaust Filter - 370					●			
#2846	Exhaust Filter - G			●	●				
#5036AM	Microfilter - X & G	●	●	●	●				
#5093AM	Filter Bags - X	●	●	●	●	●		●	
#5143	Exhaust Filter - X	●	●						
#5827ER	HEPA Service Box - X (G use requires #2846)	●	●	●	●				
#5828AM	Service Box - X	●	●						
#6033AM	Exhaust Filter - C							●	
#6047AM /01-08	AIRBELT Bumper Cover - Eight Choices - C & K							●	●
#6191AM	Motor Filter - C							●	
#6198AM	Service Box - C							●	
#6432ER	HEPA Service Box - C							●	
#6431ER	HEPA Service Box - K								●
#6629AM	Filter Bags - K								●
#6695AM	Service Box - K								●
#6696AM	Filter Set - Exhaust & Motor - K								●
#7012ER	Motor Filter - FELIX						●		
#7029ER	Filter Bags - FELIX						●		
#7095ER01	Exhaust Filter - FELIX - Fun						●		
#7095ER02	Exhaust Filter - FELIX - Ice Blue						●		
#7095ER03	Exhaust Filter - FELIX - Classic						●		
#7095ER04	Exhaust Filter - FELIX - Onyx (Black)						●		
#0496AM	SEBO FRESH - Air Freshener	●	●	●	●	●	●	●	●
#1084HG	20" Extension Wand - Light Gray	●	●	●	●	●	●	●	●
#1090HG	Flat Upholstery Nozzle - Lt. Gray	●	●	●	●	●	●	●	●
#1092DG	Crevice Tool - Dark Gray	●	●			●	●	●	●
#1092JE	Crevice Tool - Light Gray			●	●				
#1092SW	Crevice Tool - Onyx (Black)	●					●		
#1325HG	Wall & Floor Brush - Lt. Gray	●	●	●	●	●	●	●	●
#1329DG	Dusting Brush - Dark Gray	●	●	●	●	●	●	●	●



		AUTOMATIC X4	AUTOMATIC X5	ESSENTIAL G1	ESSENTIAL G2	ELECTRONIC 370	FELIX	AIRBELT C	AIRBELT K	ET-1	ET-2	ET-C	ET-H
#1359DG	Parquet Brush for Uprights - Dark Gray	●	●	●	●	●							
#1491DG	Upholstery Nozzle - Dark Gray	●	●			●	●	●					
#1491JE	Upholstery Nozzle - Light Gray			●	●								
#1491SW	Upholstery Nozzle - Onyx (Black)	●					●						
#1495AM	Nine-foot Extension Hose - Lt. Gray	●	●	●	●	●	●	●	●				
#1496DG	Radiator Brush - Dark Gray	●	●	●	●	●	●	●	●				
#2780AM	Central Vac Adapter									●	●	●	●
#5400-1	Sealing Strip - 12 inches	●											
#5400-2	Sealing Strip - 15 inches		●										
#6179DA	Hand-held Turbo Brush - Dark Gray	●	●	●	●	●	●	●	●				
#6391DA	Parquet Brush for Canisters - Dark Gray							●	●				
#6627DG	Upholstery Nozzle - Dark Gray								●				
#6780ER	Turbo Head for Canisters - Dark Gray							●	●				
#7158	Shoulder Strap - Dark Gray						●						
#7200DG	Premium Parquet Brush for Canisters and FELIX - Dark Gray (#7200VO Orange & #7200SR Ivory)						●	●	●				
#7260DG	Kombi Nozzle - Dark Gray						●	●	●				
#1991AM	3-Piece Kit - X, G and 370 #1084HG Extension Wand, #1495AM 9-ft. Hose and #1359DG Parquet Brush	●	●	●	●	●							
#1998AM	3-Piece Kit - FELIX #1084HG Extension Wand, #1495AM 9-ft. Hose and #1329DG Dusting Brush						●						
#2046	Brush Strip					●						●	
#2758ER	Brush Roller Set												●
#2838AM	Brush Roller - 15 in.				●		●				●		
#5010AM	Brush Roller - 12 in.	●		●			●		●	●			
#5290AM	Brush Roller Set		●										

## duo BRUSH MACHINE

#0478AM	duo-P Clean Box	●
#0472AM	5-Pack of duo-P Powder	●
#3005ER	duo Brush Roller	●
#6392	duo Hand Brush	●
#CD100AM	duo Daisy Brush	●

## DISCO POLISHER

#3286ER40	Red & Yellow Pad Set	●
#3230ER30	Green Pad	●
#3230ER00	Blue Pad	●



All SEBO vacuums, attachments and accessories are made in Germany and are built to last!

Reliability is Standard™

# SEBO Vacuums Receive International Recognition and Product Accolades!

## Dogs Today Magazine,

June 2008 issue, London, England, gave a "Five Star Rating" to the FELIX as the best upright cleaner for removing pet hair! It was considered easy to assemble, lightweight in operation, and cleaned exceptionally well on a variety of surfaces. They noted that this stylish vacuum earned the "Seal of Approval" from the British Allergy Foundation. See pages 34 to 36.

## Better Homes and Gardens Magazine,

May 2008 issue, chose the AIRBELT K2 as an "Editor's Pick" and noted its strong suction, its bumper that prevents damage to walls and furniture, and its stylish design. See page 88.

## New York Times Style Magazine,

November 4, 2007 issue, displayed the FELIX Fun on the front cover. There was also a brief article called "Inside the Box," on page 114.

## 02138 Magazine,

November/December 2007 issue, chose the FELIX Premium Classic for the "What is on Your Gift Wish List?" The featured photo appears on page 42.

## Consumer's Digest Magazine,

October 2007 issue, chose the AUTOMATIC X4 as "Best Buy" for bagged upright vacuums. It reported that the X4 is the lightest vacuum in its price range and has automatic height adjustment. See page 48.

## PLUS X Award,

May 24th, 2007, Berlin, Germany, awarded the PLUS X Seal to the AUTOMATIC X4 in the category "Innovation."

## PLUS X Award,

May 24th, 2007, Berlin, Germany, awarded the PLUS X Seal to the AIRBELT K3 in the category "Ease of Use."



## Domino Magazine,

March 2007, the AUTOMATIC X4 made "The Green List," and it mentioned it lies flat to get under the sofa. See page 61.

## Wired Test Magazine,

November 2006 issue, chose the FELIX as "Editors' Pick" for vacuums in the "Best Gadgets and Gizmos on the Planet 2007." The FELIX was the lightest tested, weighing only 15.4 pounds, and the overall best. See page 116.

## Real Simple Magazine,

September 2006 issue, gave the FELIX the "Product Spotlight," and mentioned its solid and quiet performance, on pages 251 and 254.

## PLUS X Award,

May 2006, Berlin, Germany, awarded the PLUS X Seal to the FELIX in the category of "Ease of Use." The award was showcased in the Hall of Fame at the IFA Show, Berlin, September 2006.

## Domino Magazine,

April 2006 issue, awarded "Five Check Marks" each for the AUTOMATIC X4 upright and the AIRBELT C3.1 canister. The X4 is considered industrial chic to the max. They also noted that it self adjusts to different carpet heights and bare floors. The C3.1 is considered to be sleek and have intense, but quiet, suction. See pages 114 and 115.

## TIME Magazine,

December 2005 issue, placed the FELIX in its "Best Products of the Year" issue, on page 50.

## Consumer's Digest Magazine,

August 2005 issue, chose the FELIX as "Best Buy" for bagged upright vacuums. It mentioned its versatility, quiet operation, and that its belts should last the life of the unit, on page 68.

Please visit our website  
[www.sebo.us](http://www.sebo.us)  
to locate a retailer  
near you.



**MADE IN GERMANY**

by Stein & Co. GmbH  
Since 1978