



LIFETIME
LIMITED
WARRANTY

Alen T500 Air Purifier

USER MANUAL

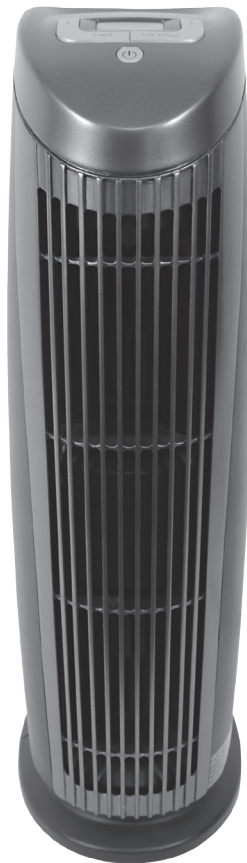


TABLE OF CONTENTS

Air Purifier Safety	4
Using Your Air Purifier	5
Operating Your Unit	
Identification Of Parts	
Know Your Air Purifier	8
Care & Maintenance	8
Replacing The Filter	
Why You Should Replace Your Filter	
Alen Replacement Filter <i>AutoShip</i> Plans	
How to Replace The Filter	
Frequently Asked Questions	10
Lifetime Limited Warranty	10
Product Specifications Table	12

AIR PURIFIER SAFETY

Provided in this manual are important safety messages regarding your electrical home appliance. Always read, follow and save all safety directions.

Operational Requirements

- Use a level surface at least 6" (15.2cm) from heat sources such as ranges or heaters.
- Do not cover the unit or impede air flow.
- Do not block air vent openings or place air purifier on a soft surface such as a bed or sofa.
- Ensure filter is correctly installed before turning on unit.
- Always unplug the unit before changing the filter. Do not try to change the filter during operation.
- Operate indoors only. Do not use in a window.

Electrical and Safety Requirements — Reduce your risk of fire or electrical shock. Failure to follow these instructions can result in death, fire or electrical shock.

- Do not connect unit to any electrical socket that is damaged.
- Unplug air purifier before servicing.
- Always turn off the air purifier off before unplugging.
- Do not use an extension cord. Do not use a voltage converter or plug adapter. Do not alter the plug in any way.
- Do not plug the air purifier into an outlet controlled by a dimmer switch.
- Do not insert or pull out plug with wet hands, it may cause electric shock.
- Disconnect the power if strange sounds, smell or smoke comes from it.
- Do not place heavy objects on the power cord and take care so that the cord is not compressed as there is danger of fire or electric shock.
- Do not exceed the rating of the power outlet or connection device. May cause electric shock or fire due to excess heat generation.
- Use only in the proper electrical socket type. Socket type (voltage & hertz) can be found on the product sticker on the side or bottom of the unit. Plugging the unit into the incorrect socket type can damage/destroy the unit.
- To reduce the risk of electric shock, this equipment has a polarized plug (one blade is wider than the other). This plug will fit in a polarized outlet only one way. If the plug does not fit fully in the outlet, reverse the plug. If it still does not fit, contact qualified personnel to install the proper outlet.

General Safety Requirements




- Do not use near a bath, shower, swimming pool or where a unit can get wet.
- Change your filter on a regular basis, so dust and particles do not build up.
- Do not use next to a source of heat, such as a ranger, heater or dryer.
- Never insert fingers or foreign objects into air grills or vents.
- Never try to take apart or repair the unit by yourself.
- Do not drop the unit, as this can result in damage.

- Do not climb up or sit on the unit. You may be injured if you fall or if the unit falls over.
- Do not spray insecticides or any other flammable sprays near the machine. It may cause explosion or fire.

USING YOUR AIR PURIFIER

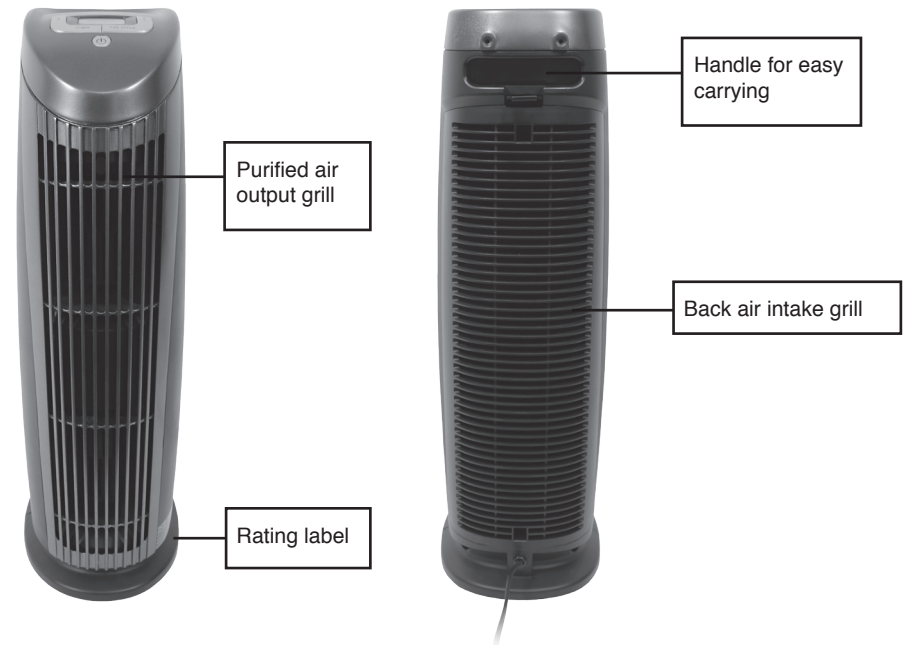
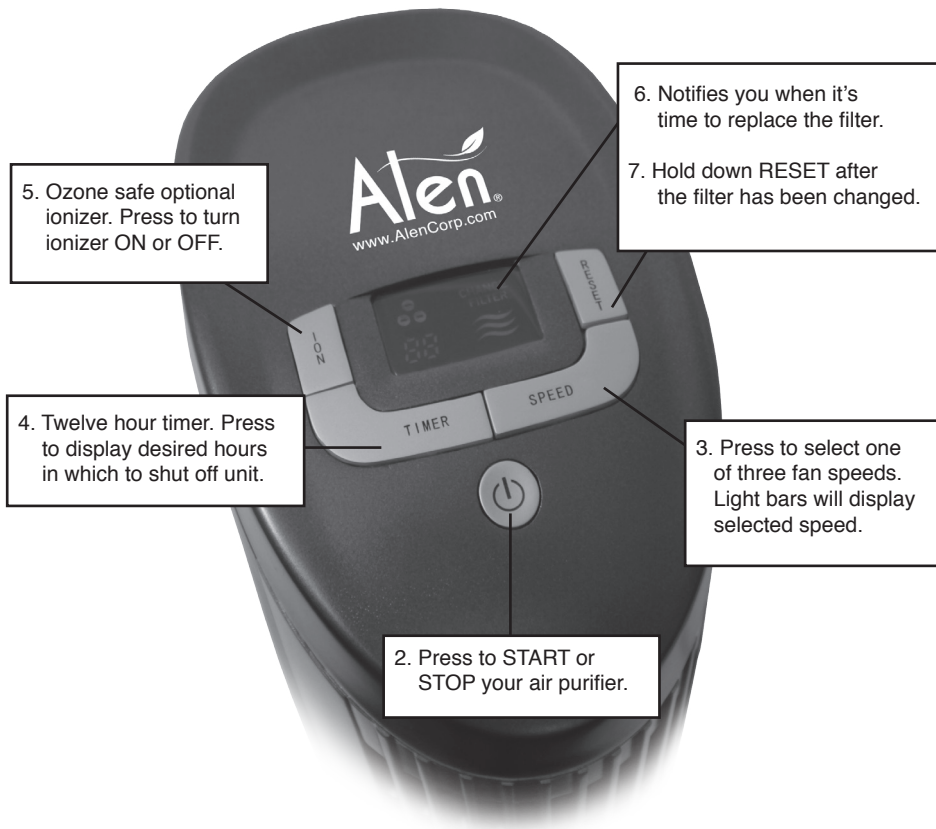
Operating Your Unit:

1. Plug your air purifier into a grounded outlet.
2. Press POWER to start the air purifier. When your unit is on the control panel screen will light up. To stop the air purifier press POWER and the screen will turn off.
3. Press SPEED and watch the indicator lights until desired fan speed is achieved.

Fan Speed	Result	Airflow (CFM)	Coverage (SqFt)
Level 1 	Basic cleaning power	48	185
Level 2 	Moderate cleaning power	83	320
Level 3 	Maximum cleaning power	130	500

4. Press TIMER to have the air purifier automatically turn off in a set amount of hours. Up to twelve hours.
5. Select ION to activate the ozone safe built-in ionizer. Activation of the IONIZER can enhance your unit's ability to remove airborne particles (similar to the way dust is attracted to a TV screen) and keep the air fresh. Press ION again to turn off.
6. Filter replacement indicator – The CHANGE FILTER text will illuminate when it is time to change your filter.
7. After changing the filter, RESET the filter indicator by holding down RESET while the unit is ON until the illuminated bars disappear.

Identification Of Parts



KNOW YOUR AIR PURIFIER

When using the air purifier for the first time in a room, many prefer to use a higher fan speed such as speed three for at least two hours in order to clean the room's air initially.

Features

- HEPA style filtration captures dust, allergens and airborne pollutants
- Activated Carbon layer traps light odors and chemicals (VOCs) from common household products
- Sleek tower design provides space saving benefits
- Ionizer charges particles, causing them to clump together for improved filtration
- 3 fan speeds with a 12 hour timer to control air circulation
- Filter change indicator light keeps replacements on schedule
- Digital display with simple and intuitive touch button controls
- Auto-off safety feature when filter cover is removed
- Filter designed for easy replacement
- Lifetime Limited Warranty

CARE & MAINTENANCE

Replacing The Filter

The T500 Air Purifier has a Change Filter indicator that will alert you when it is time to change the filter. The filter change indicator factors in frequency of use and the speed that the unit is run on to determine the life of the filter. When the CHANGE FILTER light comes on, it is time to replace the filter.

The filters used in all of Alen Air Purifiers are not designed to be washed, cleaned or otherwise reused. Over time, the filters become overloaded with particles, decreasing their filtration performance. The CHANGE FILTER light will illuminate after 6 months with heavy use, and around 12 months with light to moderate use. (Heavy use = 24hrs per day, light/moderate use = 8 to 12 hours per day.)

The black foam layer of the filter, known as the Pre-Filter, captures large dust and hair. This layer is held on with Velcro®. The black Pre-Filter can be vacuumed with a soft brush attachment on your vacuum. However, the HEPA media should not be vacuumed. Doing so can damage the filter media and it will not restore the filter's performance as microscopic particles remain imbedded in the filter media.

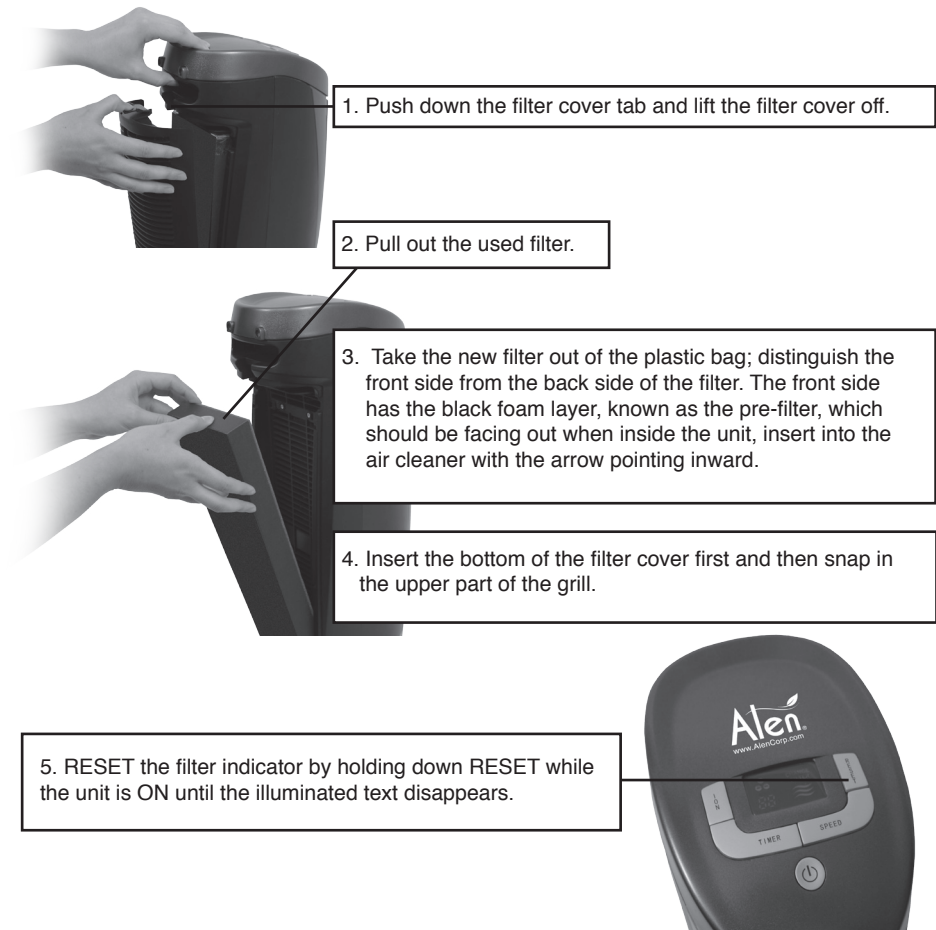
Why You Should Replace Your Filter

- Fulfills the terms of Alen's Lifetime Limited Warranty which states that the filters are required to be changed on a regular basis in order to prevent excessive stress on the unit.
- You have bought an Alen Air Purifier to improve the quality of your indoor air. Changing your filters will maintain the level of air quality you require. Excessively dirty filters can compromise the level of clean air your air purifier can provide.

Filter Options

Specific Concerns	Recommended Filter	Part Number
Allergies & Dust	HEPA-Pure	TF60
Asthma & Respiratory Issues	HEPA-Silver	TF60-Silver-Carbon
Mold & Bacteria	HEPA-Silver	TF60-Silver-Carbon
Chemicals & Cooking Odors	HEPA-Fresh	TF60-Carbon
Smoke Odor	HEPA-OdorCell	TF60-MP
Pet Owners (Dander & Odor)	HEPA-OdorCell	TF60-MP

How To Replace The Filter



FREQUENTLY ASKED QUESTIONS

How do I turn off the REPLACE FILTER light?

After changing the filter, RESET the filter indicator by holding down RESET while the unit is ON until the illuminated light turns off disappear.

How do I find out what electric specifications my unit needs?

Please refer to the rating label on the bottom of the unit. Here you will find your units voltage, hertz, amp and outlet requirements.

Can I clean the filter?

The black foam layer of the filter, known as the Pre-Filter, captures large dust and hair. This layer is held on with Velcro®. Once removed, the Pre-Filter can be vacuumed to maintain efficient operation of the unit. No other layers or parts of the filter can be washed, cleaned or otherwise reused. Please replace the filter regularly to maintain optimal performance.

I have an issue not listed in this manual.

Please visit www.AlenCorp.com and send us a message or call 1-800-630-2396. A customer service representative will respond to your inquiry in a timely manner, in most cases within a couple of hours.

What information do I need when I contact customer service for warranty?

Please refer to the rating label on the side of the unit. This rating label has your unit's lot code and other important information we need to assist you.

LIFETIME LIMITED WARRANTY

What Is Covered?

Alen offers the industry's first LIFETIME LIMITED WARRANTY program for all our air purifiers. We warrant your Alen Air Purifier to be free from defects in materials or workmanship for as long as you own it. Register your Alen Air Purifier at www.alencorp.com/register.

What Will Alen Do?

Alen will, at its option, either furnish a replacement part or replace your air purifier provided the product is determined by Alen to be defective as a result of faulty material or workmanship while in normal use. Replacement parts or units will, at Alen's option, be either new or refurbished. Alen's sole obligation under this warranty is to replace defective parts or replace your air purifier free of charge. All parts or units that are replaced become the property of Alen.

How To Get Service?

This warranty will be valid only for units in possession of the original purchaser. Proof of purchase must be presented to Alen's warranty service representative. To help us validate your warranty, we encourage you to register your Alen Air Purifier at www.alencorp.com/register.

To obtain warranty service, complete our online form or call 1-800-630-2396. The defective product or part must be shipped or delivered to Alen's authorized service center. All postage, insurance and shipping charges are the responsibility of Alen and included in this warranty.

Your Lifetime Limited Warranty Program Remains in Effect Only If:

Your Alen Air Purifier is operated in accordance with the instructions provided in the Alen user manual. This includes replacing the filter at least once a year to prevent excessive stress on the motor.

Your Alen Air Purifier is connected to a proper power supply (see voltage label on unit).

Your Alen Air Purifier shows no evidence of tampering, mishandling, neglect, accidental damage, modification, and/or repair by anyone other than authorized Alen service personnel.

Ownership of the air purifier has never been transferred.

Your Alen Air Purifier is used only in the country of purchase.

Alen's AutoShip Filter Plan — Convenience, Pure Air and Savings

Regular replacement of your filter will extend the life of your air purifier and keep your air pure. Alen filters provide efficient filtration for 6 months of heavy usage, 9 months of normal usage and 12 months of light usage. With Alen's convenient *AutoShip* Filter Plan your filters will be shipped FREE right to your door, exactly when needed.

SAVE — Get FREE LIFETIME SHIPPING on every filter.

CONVENIENCE — Your filters are delivered right to your door exactly when needed. Choose a monthly plan and cancel at anytime.

LIFETIME LIMITED WARRANTY — An Alen *AutoShip* plan is the convenient way to extend the life of your air purifier and benefit from the Lifetime Limited Warranty.

To sign up and save just visit AlenCorp.com/filters or call **1-800-630-2396**.

Product Specifications

Coverage Area	500 Square Feet
Size (Inches)	6"W x 10"D x 22"H
Weight (Unit)	9 lbs.
Weight (Shipping)	12 lbs.
Noise on High	56 dB
Power Consumption on High	53 W
Power Supply	120 V
Warranty	Lifetime Limited

DISCLAIMERS/LIMITATIONS

ALEN'S LIFETIME LIMITED WARRANTY IS VALID ONLY FOR THE ORIGINAL PURCHASER AND IS IN LIEU OF ALL OTHER WARRANTIES, EXPRESS OR IMPLIED, INCLUDING WARRANTIES OF MERCHANTABILITY AND FITNESS FOR A PARTICULAR USE OR PURPOSE. ALEN'S SOLE LIABILITY WITH RESPECT TO DEFECTS IN MATERIALS AND WORKMANSHIP IN THE AIR PURIFIER SHALL BE, AT ALEN'S OPTION, TO FURNISH REPLACEMENT(S) OF THE DEFECTIVE PART(S) OR REPLACE THE AIR PURIFIER ON THE BASIS DESCRIBED ABOVE. ALEN WILL NOT INSTALL ANY REPLACEMENT PARTS IT PROVIDES OR PROVIDE LABOR WITH RESPECT TO THE SAME. EXCEPT AS STATED IN THE IMMEDIATELY PRECEDING SENTENCE, ALEN SHALL HAVE NO LIABILITY, WHETHER UNDER A CAUSE OF ACTION IN TORT, STRICT LIABILITY, CONTRACT, OR OTHERWISE, TO ANY PERSON FOR ANY CLAIM, INJURY, LOSS, DAMAGE OR EXPENSE (INCLUDING ANY DIRECT, INDIRECT, SPECIAL, CONSEQUENTIAL, INCIDENTAL, PUNITIVE OR EXEMPLARY DAMAGES) IN ANY WAY ARISING OUT OF OR RELATING TO THE AIR PURIFIER OR ITS USE BY ANY PERSON.

SOME STATES DO NOT ALLOW LIMITATIONS ON AN IMPLIED WARRANTY OR HOW LONG AN IMPLIED WARRANTY LASTS, SO ANY SUCH LIMITATION IN ALEN'S LIFETIME WARRANTY MAY NOT APPLY TO YOU. SOME STATES DO NOT ALLOW THE EXCLUSION OR LIMITATION OF INCIDENTAL OR CONSEQUENTIAL OR OTHER DAMAGES SO ANY SUCH EXCLUSIONS OR LIMITATIONS IN ALEN'S LIFETIME WARRANTY MAY NOT APPLY TO YOU. ALEN'S LIFETIME LIMITED WARRANTY GIVES YOU SPECIFIC LEGAL RIGHTS. YOU MAY ALSO HAVE OTHER RIGHTS WHICH VARY FROM STATE TO STATE.



Copyright © 2013 Alen Corp. All Rights Reserved.
t500-pm-2-2013