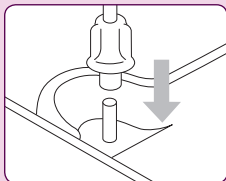


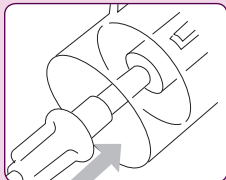
How to use your nebulizer compressor system

The following is a basic guide for using a Philips Respironics compressor with SideStream nebulizer. You should always refer to the manual supplied with your compressor and nebulizer for more detailed and specific instructions.

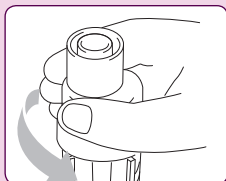
1. Plug your compressor into the electrical supply, then connect one end of the long tubing onto the airflow outlet on your compressor.



2. Push the other end of the long tubing onto the stem at the bottom of your SideStream nebulizer.



3. Unscrew the two halves of the SideStream nebulizer.



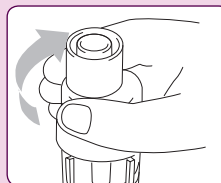
Putting medication into the nebulizer.

(If you have a different nebulizer, please refer to the instructions included with it).

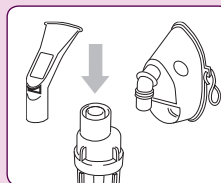


4. Remove the medication from the pack and pour into the bottom part of the SideStream nebulizer. Make sure all of the contents are emptied out.

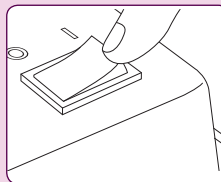
Please note: If you have been instructed to dilute the solution, add the amount of saline as instructed.



5. Screw the two halves of the nebulizer back together.



6. Connect either the mouthpiece or the mask to the top of the SideStream nebulizer. If using a facemask, hold it over your mouth and nose whilst placing the elastic strap around the back of your head. If using a mouthpiece, place it between your lips.



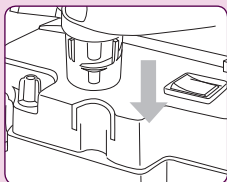
7. Remember to relax as much as possible. Sit upright in a chair or in bed. When you are ready, turn on the compressor using the on/off switch and take normal steady breaths.

- Always keep your compressor on a firm surface, such as a table, when in use. Do not place your compressor on the carpet floor, to avoid dust being drawn in.
- Be careful not to block the vents on the outside of the compressor.
- Keep the compressor clean and free from dust by wiping with a damp cloth.

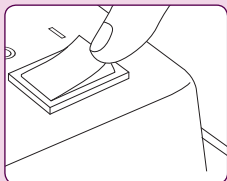
Your treatment will
now begin →

How to use your nebulizer compressor system

8. Should you need to stop midway through your treatment, turn off the compressor using the On/Off switch and place the nebulizer in its holder located on the compressor. This will prevent the nebulizer from falling over causing drug to spill out.



9. Turn off the compressor when your nebulizer begins to make a 'spluttering' noise. Your treatment has now finished.



There will be a small amount of medication left in the nebulizer at the end of your treatment. This is perfectly normal.